



1906

CITY OF EDMONDS  
HISTORIC RESOURCES SURVEY  
2015

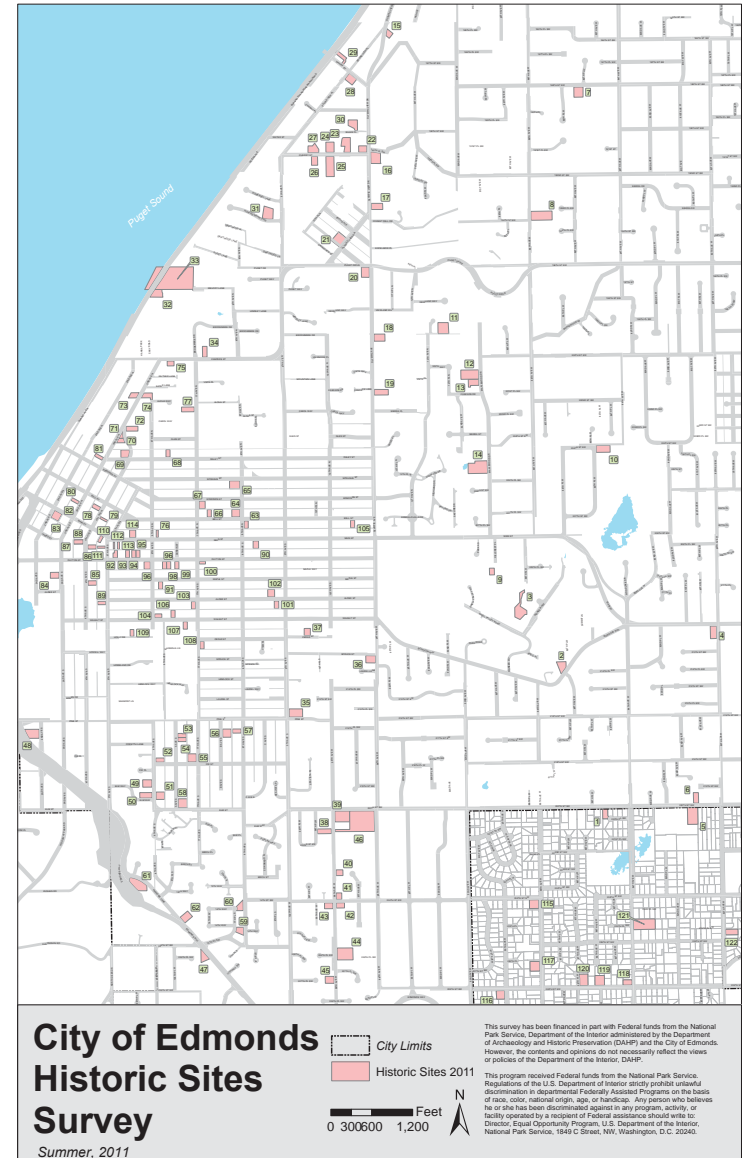
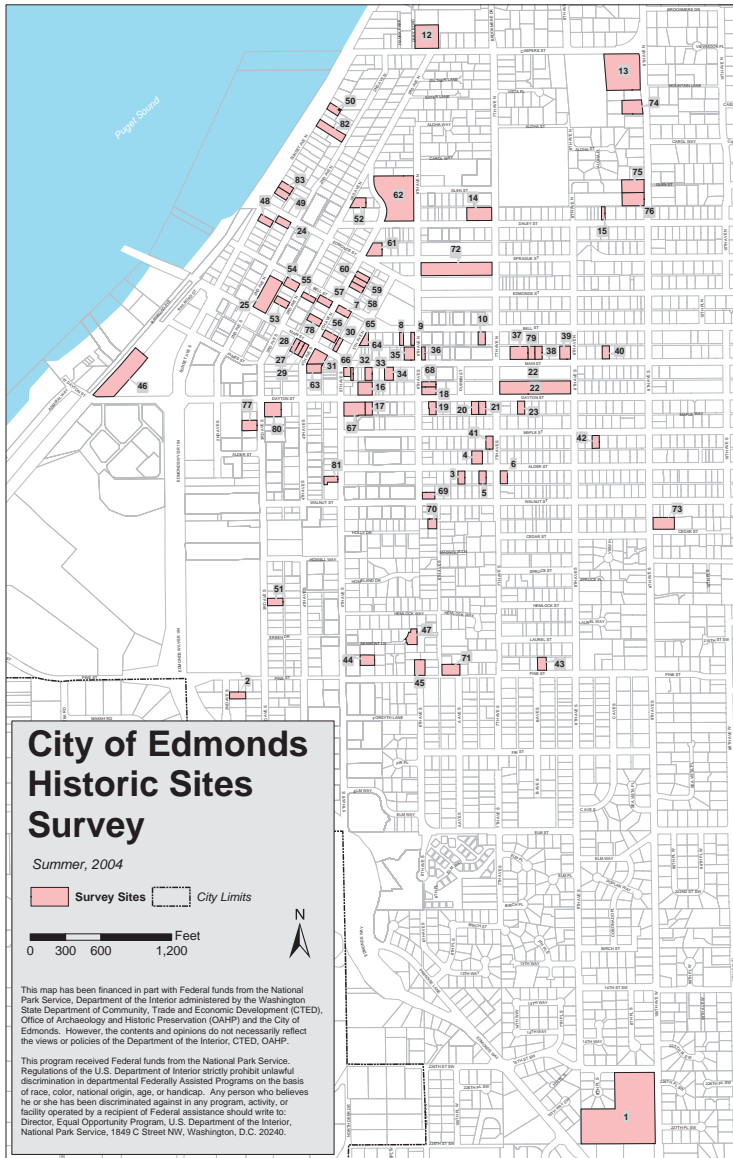


SHKS ARCHITECTS

1. Purpose
2. Historic Context
3. Methodology
4. Results
5. Historic Register & Resources
6. Questions



EDMONDS TRAIN DEPOT, 1926  
All historic images credit to the Edmonds South-Snohomish Historical Museum unless noted otherwise.





GEORGE BRACKETT



MAIN STREET, 1909



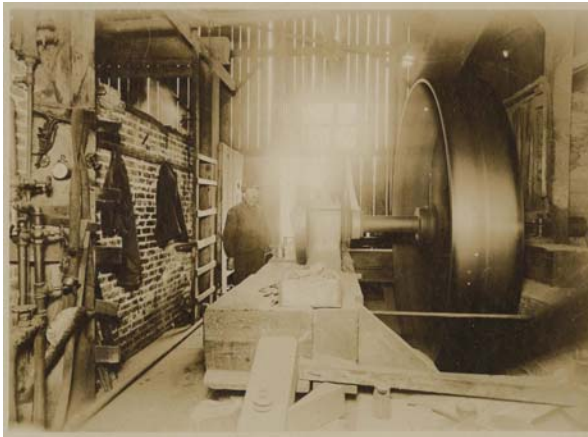
GRADING MAIN STREET AT 4TH AVENUE, 1917



MILLS ALONG WATERFRONT, 1900S



EARLY WATERFRONT AND MILLS, DATE UNKNOWN



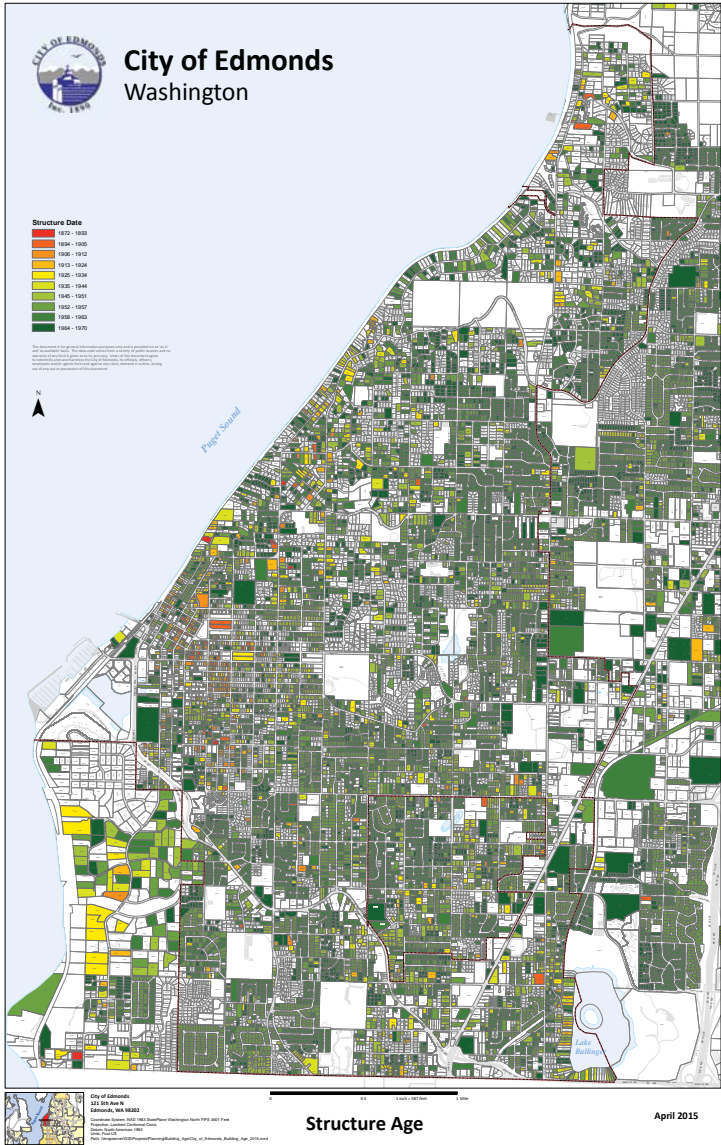
LITTLE SWEDE SHINGLE MILL EMPLOYEE, 1908



QUALITY SHINGLE MILL EMPLOYEE, 1947



QUALITY SHINGLE MILL, 1953



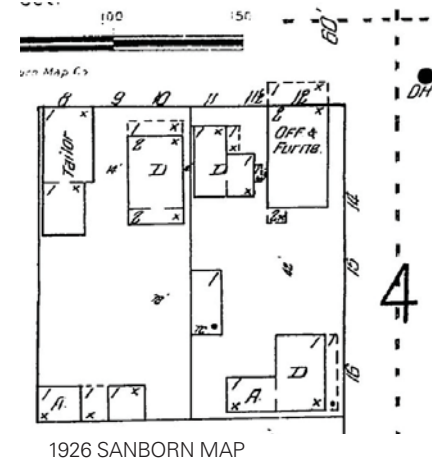
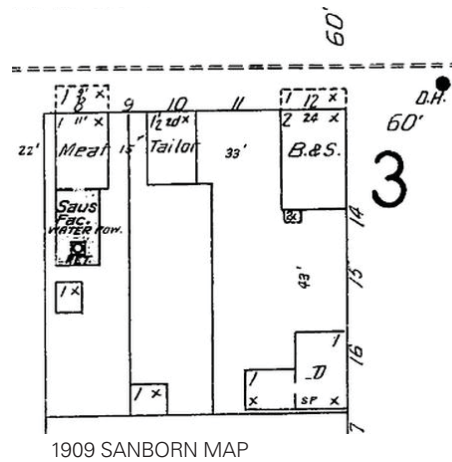


140 4TH AVE S | 1964





218-220 MAIN STREET | 1900





8604 184TH STREET SW | 1910



927 MOUNTAIN LN | 1891



16031 75TH PL W | 1910



809 CARY RD | 1881



209 2ND AVE N | 1901



17527 76TH AVE W | 1922



850 NORTHSTREAM LANE | 1967



870 NORTHSTREAM LANE | 1967



880 NORTHSTREAM LANE | 1968



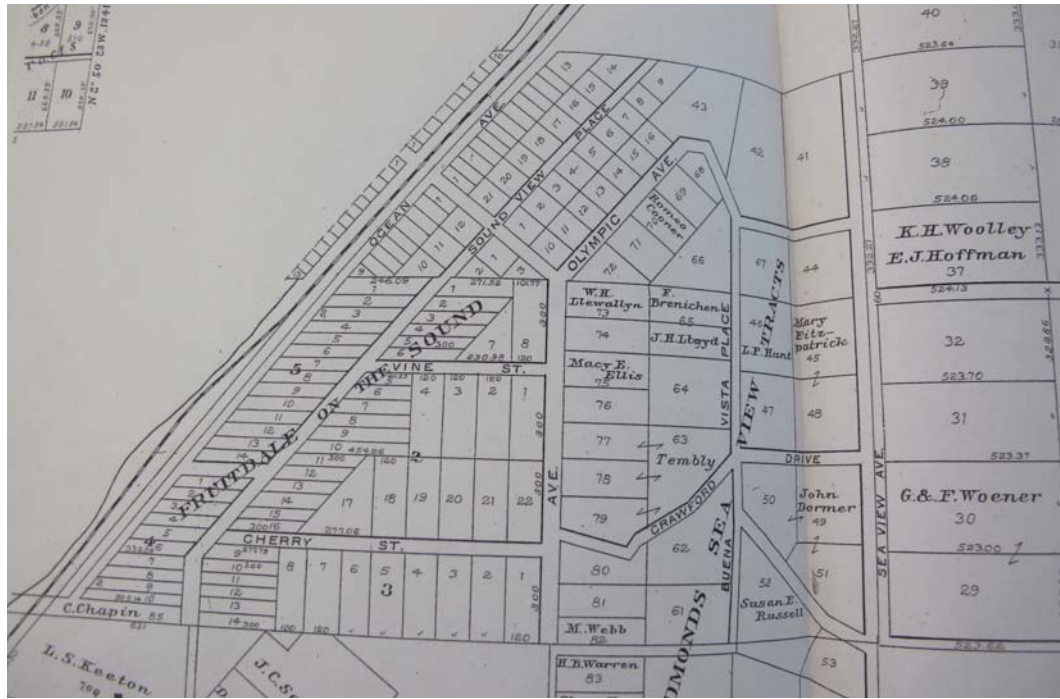
19822 MAPLEWOOD DRIVE | 1955



870 NORTHSTREAM LANE | 1967



19902 MAPLEWOOD DRIVE | 1966



18515 OLYMPIC VIEW DRIVE | 1916



18703 SOUND VIEW PLACE | 1939





1520 9TH AVE N | 1873-1888



JAMES CURRIE | DATE UNKNOWN



BIGELOWS | DATE UNKNOWN

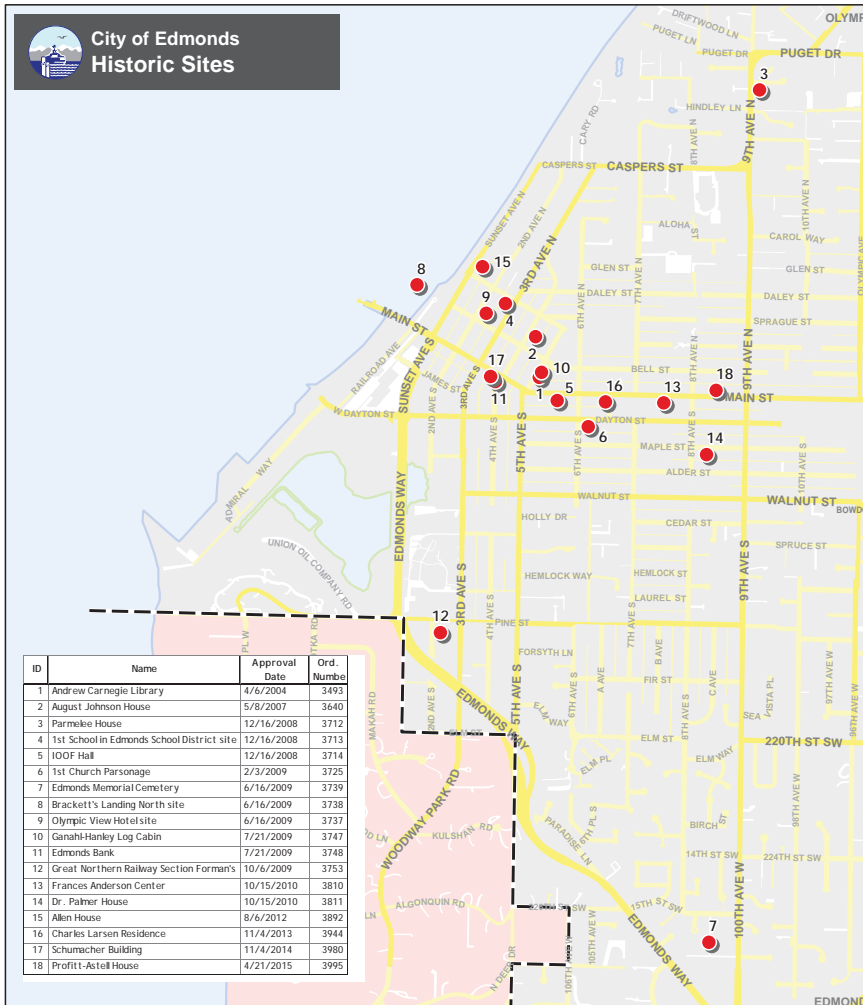


DATE UNKNOWN



1996

Historic images courtesy of property owner.



### HISTORIC PROPERTY INVENTORY

WA only  
No controls/No incentives

### EDMONDS REGISTER OF HISTORIC PLACES

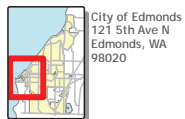
Edmonds only  
Review of alterations required  
Financial incentives and code exemptions available

### WASHINGTON HERITAGE REGISTER

WA only  
No controls/No incentives

### NATIONAL REGISTER OF HISTORIC PLACES

National: Local/State/National significance  
No controls  
Financial incentives available

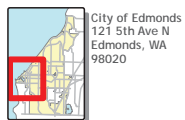
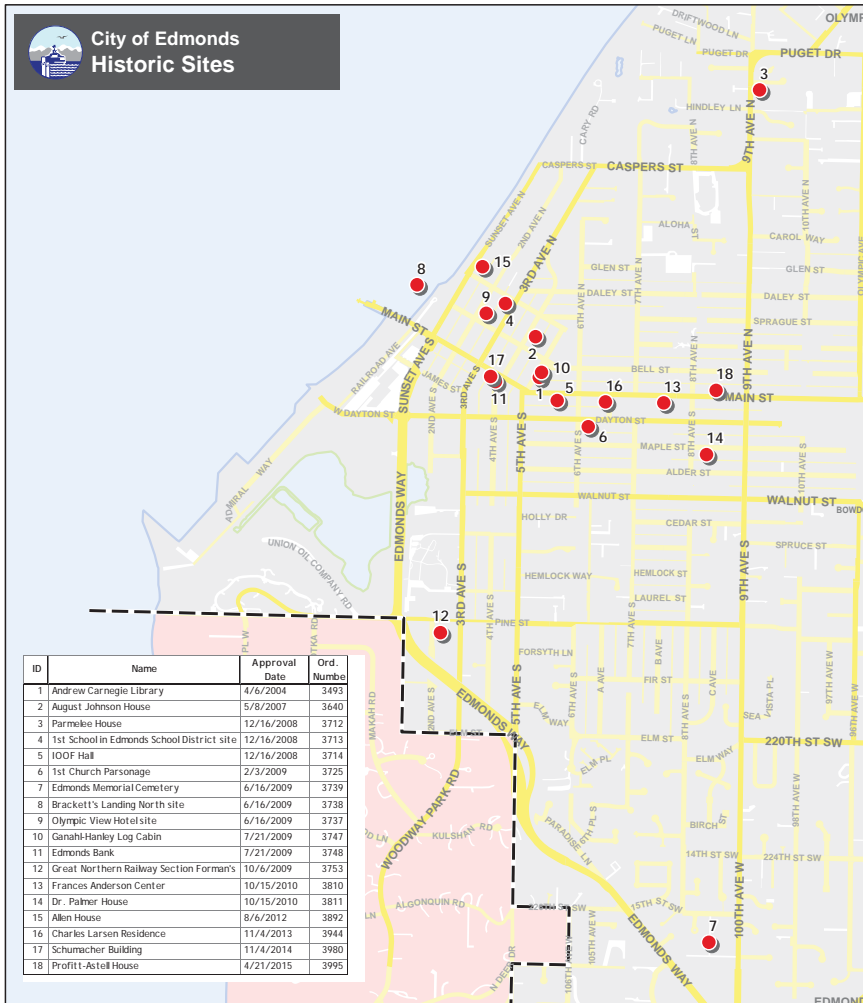


### Edmonds Register of Historic Places

This map shows the location of sites currently designated as historic resources and listed on the Edmonds Register of Historic Places.



May 2015



### Edmonds Register of Historic Places

This map shows the location of sites currently designated as historic resources and listed on the Edmonds Register of Historic Places.

May 2015

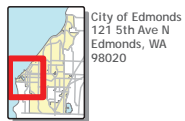
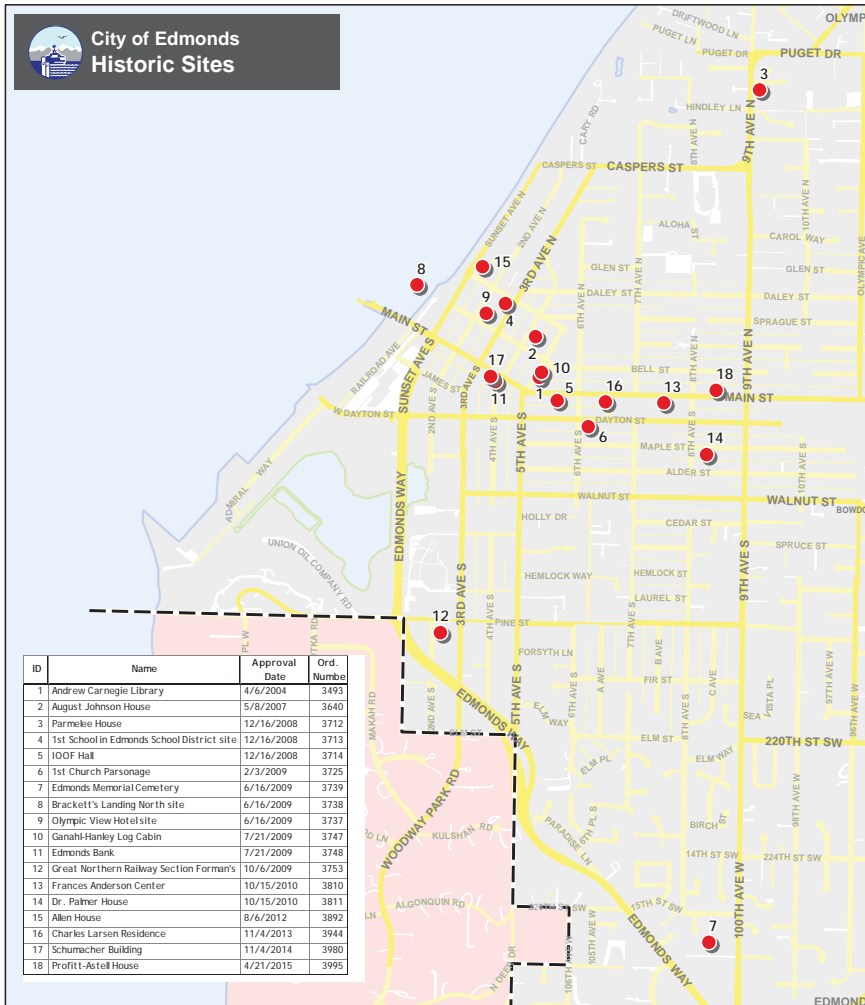
## EDMONDS REGISTER OF HISTORIC PLACES

Criteria:

- A. Is significantly associated with the history, architecture, archaeology, engineering or cultural heritage of the community;
- B. Has integrity;
- C. Is at least 50 years old, or is of lesser age and has exceptional importance; and
- D. Falls into at least one of 11 categories of significance.

Application Materials:

- 1. Nomination form
- 2. Description of all interior and exterior features and outbuildings that contribute to the designation (architectural character checklist)
- 3. Map
- 4. Photographs



### Edmonds Register of Historic Places

This map shows the location of sites currently designated as historic resources and listed on the Edmonds Register of Historic Places.

May 2015

## EDMONDS REGISTER OF HISTORIC PLACES

### Incentives:

- Stewardship of Edmonds' History
- Special Tax Valuation
- Nonconforming Building Restoration
- Special Restoration Code
- Historic Reconstruction Code
- Special Parking Provision

### Controls:

- Commission review required for change of use, new construction, reconstruction, alteration, restoration, remodel, repair, move or demolition of property.
- Certificate of Appropriateness or Waiver



## ADDITIONAL RESOURCES:

Edmonds South-Snohomish Historical Museum  
118 5th Ave N, Edmonds

Edmonds Historic Preservation Commission

Snohomish County Assessor and Auditor

WISAARD: Washington Information System for Architectural and Archaeological Records Data  
[www.fortress.wa.gov/dahp/wisaard/](http://www.fortress.wa.gov/dahp/wisaard/)

Secretary of the Interior Standards for the Treatment of Historic Properties  
<http://www.nps.gov/tps/standards.htm>

National Park Service Preservation Briefs  
<http://www.nps.gov/tps/how-to-preserve/briefs.htm>

WA State Department of Archaeology & Historic Preservation  
<http://www.dahp.wa.gov/>

History Link  
<http://www.historylink.org/>

*A Field Guide to American Houses* by Virginia McAlester